

Other Prominent Buildings Downtown

The Colonial Theater (466 A Street). The Colonial Theater and office building was completed in 1919 by the Colonial Investment Company at a cost of \$175,000. The company was comprised of C.A. Spath, cashier of Farmers and Merchants Bank; Dr. C.M. Cline, a physician; and S.K. Mitty, contractor. The owners boasted that it was the "biggest and finest theater" in Idaho with 1,400 seats. The existing facade in Renaissance Revival style is rare in Idaho in that it is comprised totally of terra cotta.

Bonneville Museum (formerly Idaho Falls Public Library) (Elm Avenue and North Eastern Avenue). The former public library was completed in 1916 with \$15,000 in assistance from the Andrew Carnegie Corporation. The construction of the library was one of the major projects of the Village Improvement Society, a group of prominent Idaho Falls women who worked at the turn of the century to improve both the quality and appearance of Idaho Falls. The building's 1938-1940 entrance is a fine example of Art Deco design.

Idaho Falls Historic Preservation Commission

Billy Lester, Chair
Brenda Ringe Pace, Vice Chair
Elaine Hunter
Roxane Mitro
Karen Abbot
William Shaw
Pam Jagosh

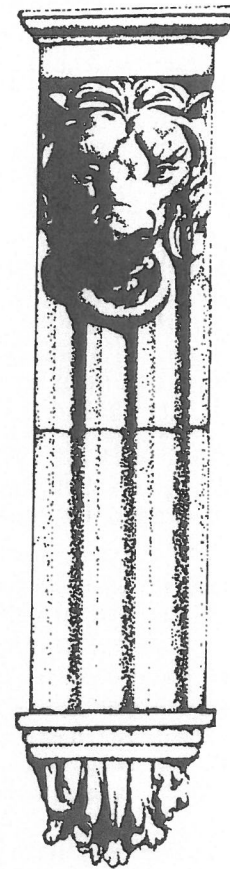
Renee Magee, Text
Todd Meyers, Staff
Brian Tomsett, Map
City of Idaho Falls Planning and Building
620 Park Avenue
Idaho Falls, Idaho 83405
(208) 529-1276

Cover illustration: lion head on the entablature of the Shane Building. Drawn by Reginald Fuller, City of Idaho Falls Planning and Building.

The activity that is the subject of this publication has been funded in part with federal funds from the National Park Service, U.S. Department of the Interior. However, the contents and opinions do not necessarily reflect the views and policies of the Department of the Interior.

This program receives federal financial assistance for identification and protection of historic properties. Under Title VI of the Civil Rights Act of 1964 and Section 504 of the Rehabilitation Act of 1973, the U.S. Department of the Interior prohibits discrimination on the basis of race, color, national origin, or handicap in its federally assisted programs. If you believe you have been discriminated against in any program, activity, or facility as described above, or if you desire further information, please write to Office for Equal Opportunity, U.S. Department of the Interior, Washington, D.C. 20240.

This publication made possible by an Idaho Travel Council grant. Printed in the USA for ITC/IDC: ITCG-00-VI-2 44M. For more information on Idaho, call 1-800-VISITID.



HISTORIC DOWNTOWN WALKING TOUR OF IDAHO FALLS

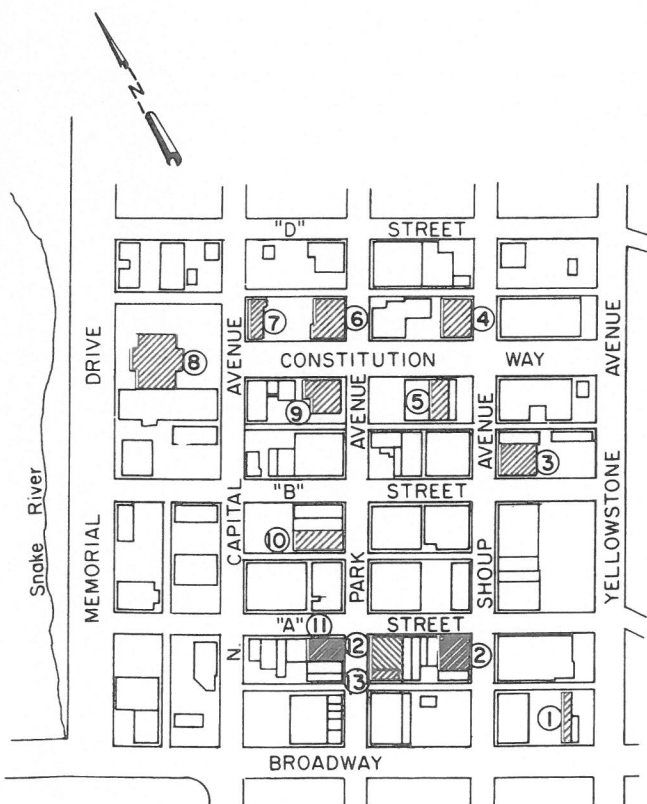
Like many other communities in the west, Idaho Falls began as a crossroads to elsewhere. In the 1860's, freighters, packers, and prospectors traveling north from Salt Lake City to gold mines in northern Idaho and western Montana crossed the Snake River in the vicinity of present-day Idaho Falls. In 1865, the settlement of Idaho Falls (then called Eagle Rock) began with a log bridge across the Snake, a small store, and soon the first bank chartered in the state. During the 1880's, the earliest business district grew to the immediate east of the bridge and south of present-day Broadway Avenue. The first business buildings were frame or log, fronting on board sidewalks and dirt streets. As Idaho Falls began to develop into an agricultural community and grew to 1,300 residents at the turn of the century, these buildings were replaced by stone and brick commercial buildings, still fronting on boardwalks and dirt streets.

As the first business district was changing character, it was also growing north — to Broadway, A, and B streets, the core of today's central business district.

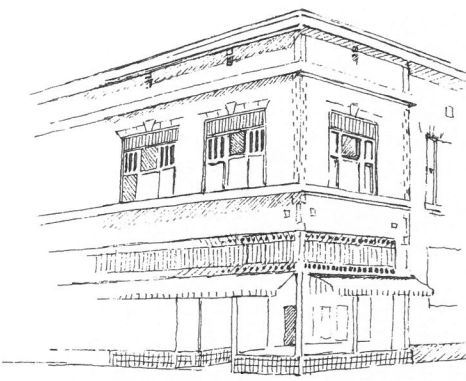
No buildings from the first business district of the city survived but several of the city's prominent buildings built in the period from 1894 to 1940 have been preserved and are now listed in the National Register of Historic Places. The buildings are varied in style, bulk and materials. One reflects the early local materials that once dominated the central business district; others reflect the growing sophistication of a community moving from a crossroads to the economic, cultural, and governmental center of a region built on irrigated agriculture.



1 Rocky Mountain Bell Telephone Company Building (246 West Broadway). Known since 1953 as the Labor Temple, this building was constructed in 1910 by Rocky Mountain for use as a telegraph office. The building was used by the phone company until the late 1920's. It was then acquired by the Catholic Church, named Faber Hall, and used as a parish hall. In 1953 the building was purchased by the local carpenters union and used as a meeting hall. Recently it has been used as a private residence. It is the city's earliest remaining example of Renaissance Revival style.



2 Shane Building (381 Shoup Avenue). This excellent example of the use of terra cotta with Renaissance Revival style was constructed in 1915. The main entrance of the building is surrounded by a terra cotta entablature with lion heads and a heraldic shield. Soon after it was built, the first floor housed a women's clothing store, a grocery store, and a furniture store.



3 **Montgomery Ward Building** (504 Shoup Avenue). This building was erected as the Montgomery Ward and Company Department Store in 1928-1929 and has not been significantly altered. It is an excellent example of a combination of styles found frequently in southern Idaho in the 1920's and 1930's: Renaissance Revival style with Art Deco influence.

cellent example of a combination of styles found frequently in southern Idaho in the 1920's and 1930's: Renaissance Revival style with Art Deco influence.

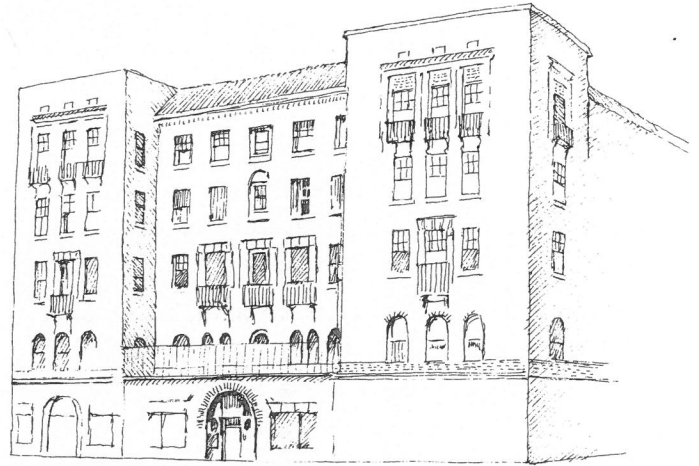


4 **Idaho Falls City Building** (308 Constitution Way). The City Hall was constructed during 1929 and 1930 and designed by Lionel E. Fisher, a principal in the Idaho Falls firm of Fisher and Aitken. This building is one of the few examples of the Beaux Arts architectural tradition found in the state of Idaho, and the exterior is unaltered. Although the interior foyer with skylights has been remodeled into offices, the lobby retains its distinctive tiles and decorative detail.



5 **Underwood Hotel** (347 Constitution Way). The Underwood Hotel, built in 1918, is unique for two reasons. It was built for Jennie Underwood, a woman entrepreneur, and the building is an example of the use of the Renaissance Revival style in a more decorative manner than is found in most other Idaho Falls buildings. The facade is dominated by a large

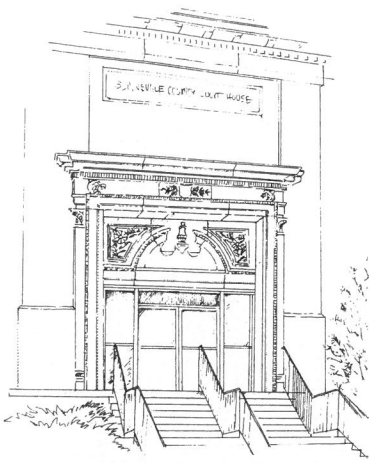
metal cornice supported on brackets. The Underwood Hotel (as well as other hotels on Constitution Way) once served passengers departing from the Oregon Shortline Railroad depot, which was located at the east end of Constitution Way.



6 **Bonneville Hotel** (410 Constitution Way). The Bonneville Hotel was built in 1926-1927 at a cost of \$335,000 by the Idaho Falls Community Hotel Corporation, a group of 421 local citizens. The corporation was conceived by the Chamber of Commerce and led by O.A. Johannsen, a prominent Idaho Falls attorney. It was created to bring a first-class hotel with convention facilities to Idaho Falls. When built, the hotel had a large central lobby, two dining rooms, a ballroom, and a sample room. The architectural firm of H.L. Stevens Co. of San Francisco designed the hotel in the architectural tradition of Italian Renaissance.



7 **Hotel Idaho** (482 Constitution Way). When the Hotel Idaho was built at the eastern end of Constitution Way in 1917 by owner F.C. Hansen, it was considered to be at an almost impossible location, surrounded by vacant land and single-family dwellings. Soon after it opened, it housed a business college as well as lodging facilities, and later the Hart-Ellsworth Auto Company, a Nash dealership, occupied the southwest portion of the main floor. The hotel did not close until 1979, and the building now houses offices.



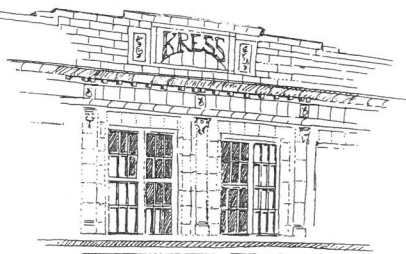
8 Bonneville County Courthouse (605 N. Capital). Lionel E. Fisher and Charles Aitken designed the courthouse, a simplified classical design built in concrete with brick veneer. The interior, with its marble stairs and wainscot, mosaic floor tile, and stained glass skylight, is one of the

state's most distinguished examples of public architecture built in the period immediately after World War I.

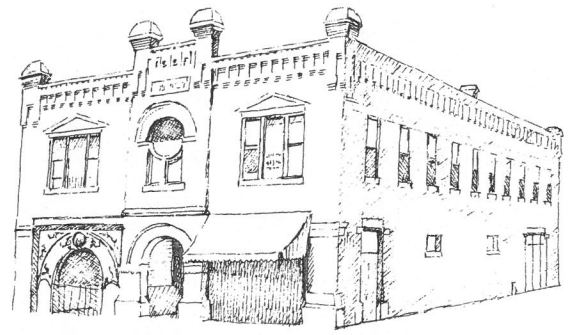


9 Former Idaho Falls Federal Building (591 North Park Avenue). The design for the former post office was completed by James A. Wetmore, a native of Philadelphia, in 1914. Two years later, at a cost of \$86,199, construction was completed on this fine example of Georgian Revival style. In addition to the post office, the U.S. Geological Survey, the U.S. Department of Agriculture News, the Civil Service Investigator, and the Defense Investigative Service occupied the building in its early years. In 1986, the U.S. Postal Service left the building, and private investors bought it, restored the exterior, and remodeled the interior into offices.

10 Kress Building (541 Park Avenue). This relatively unaltered building was constructed for S.H. Kress and Company between 1930 and



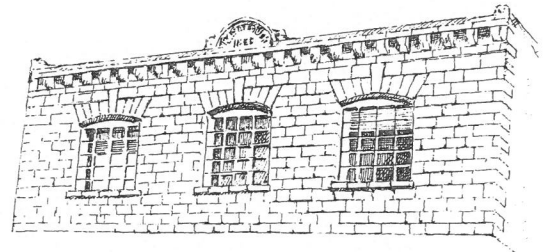
1932. The terra cotta facade of this building is rare in Idaho. Few buildings in Idaho illustrate the use of terra cotta for more than decorative material.



11 I.O.O.F. Building (393 Park Avenue). The Idaho Falls lodge of I.O.O.F., which was already thriving in 1892, built this building around 1909. It is the sole remaining example of Romanesque Revival motifs that once dominated commercial buildings on early Broadway and Park Avenues. When it was built, two arched entrances served the first floor, which housed a grocery store, the Star movie theater, and an undertaker.



12 Farmers and Merchants Bank Building (346 Park Avenue). Originally constructed with a corner entrance and of red and white sandstone in the Romanesque Revival style, the building was modified by the addition of its present brick veneer in the second decade of the century. It is a highly simplified version of the Renaissance Revival style that began to dominate commercial architecture in downtown Idaho Falls during World War I. The Farmers and Merchant Bank shared the building with a drug store and tobacco and confectionery store. Lodgings were available on the second floor.



13 Hasbrouck Building (362 Park Avenue). This building is the best remaining example of stone buildings that comprised most of Idaho Falls' commercial center at the turn of the century. Work on the building began in 1895. It originally had one story with basement; the second floor was added by 1905. Herman J. Hasbrouck, who was responsible for the original construction, was a Nebraska attorney who practiced in Idaho Falls from 1890 to 1915 and served in the Idaho Senate during the 1909-10 session.